

Smart PSS

Quick Start Guide

Contents

Opening program.....	3
Selecting live or playback	3
Live view	4
Full Screen View.....	5
Video Playback.....	6
Full Screen View.....	7
Archiving.....	8

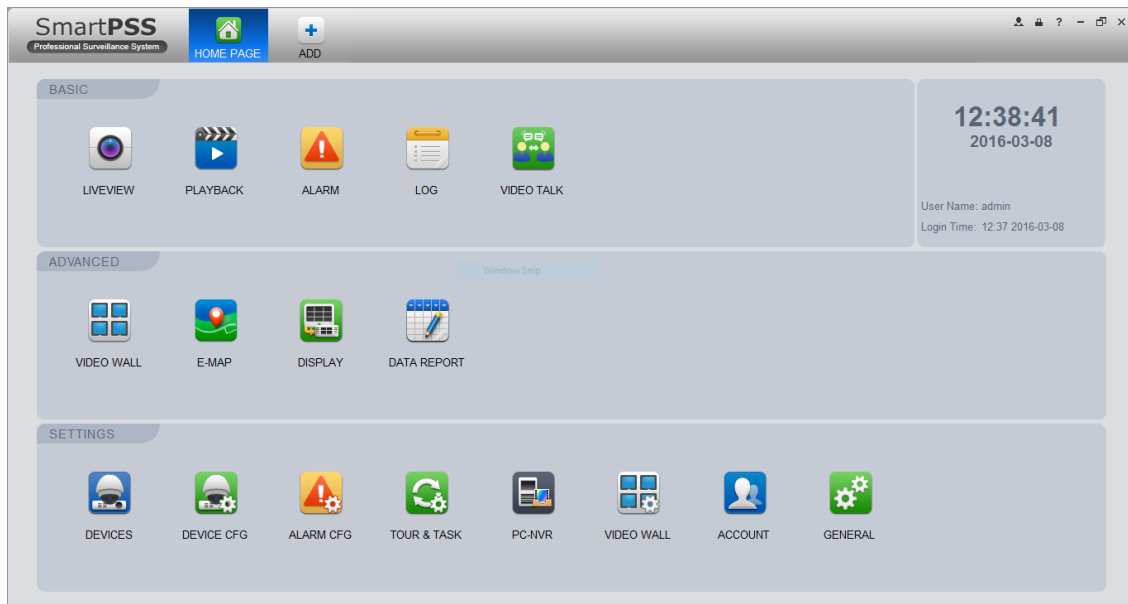
Opening program

Double click the Smart-PSS icon or select from the program tree

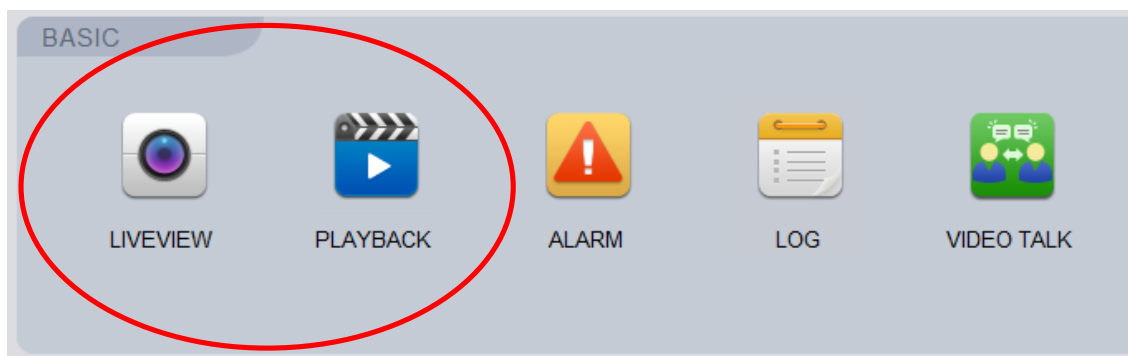


Selecting live or playback

The opening screen shows all of the program options available;



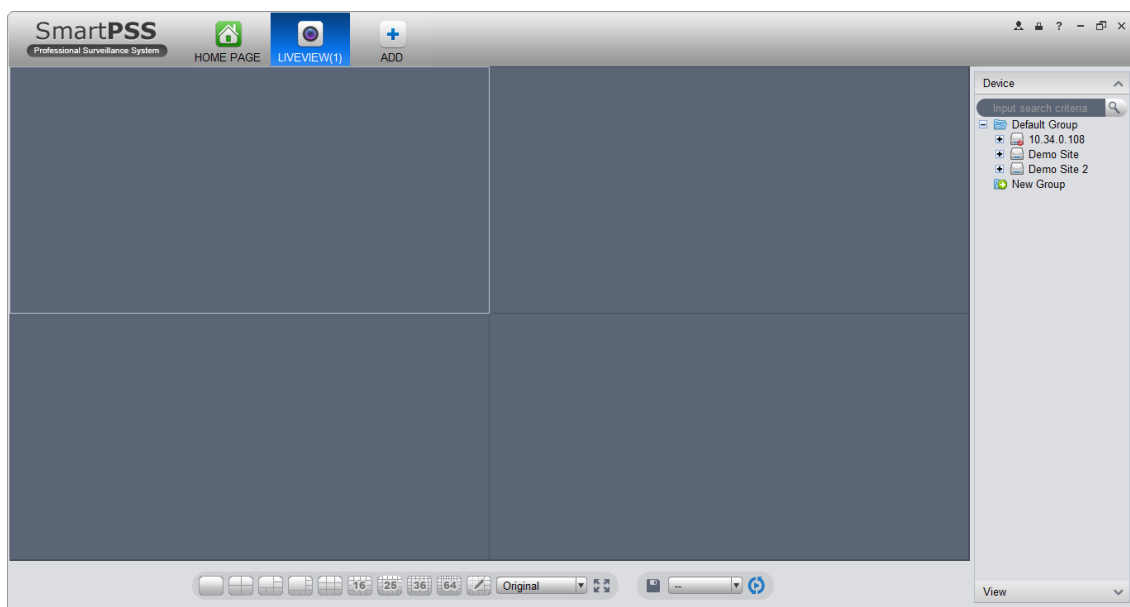
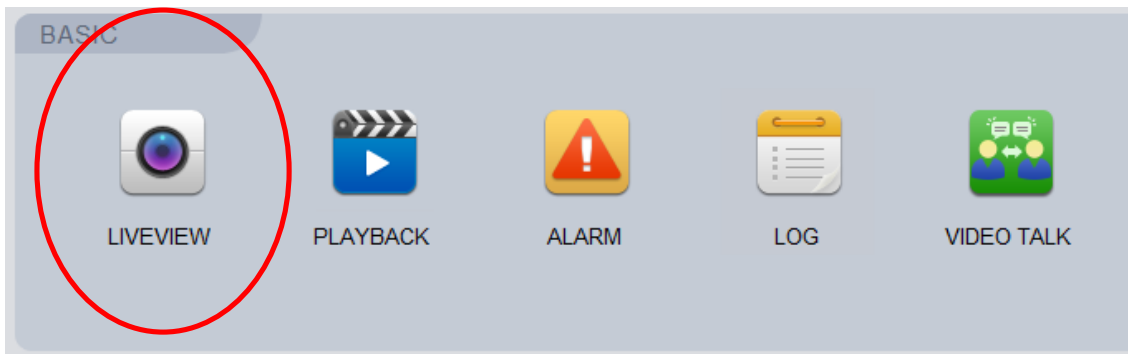
You will be using the LIVEVIEW and PLAYBACK modules;



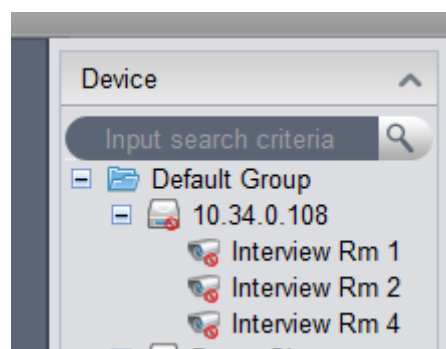
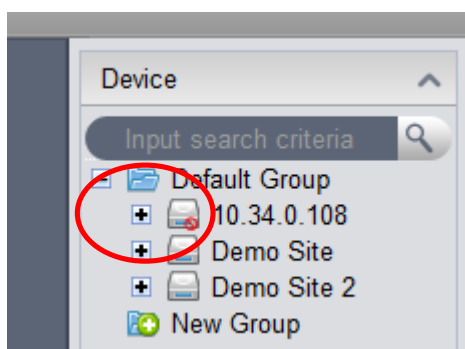
Selecting Home Page at the top of the screen will take you back to this screen at any time.

Live view

Click the LIVEVIEW icon to open the live view.



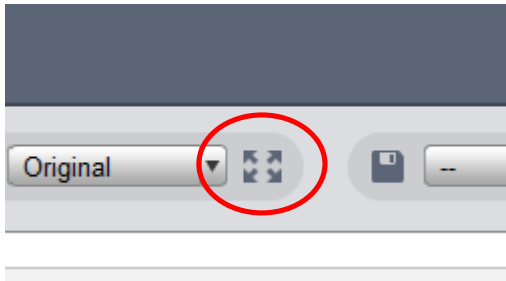
In the tree on the right hand side click on the + symbol adjacent to the recorder icon to expand the tree.



Drag the camera that you wish to view into one of the empty panes that occupy the majority of the screen space. This will cause live images from the camera to be displayed in the selected pane.

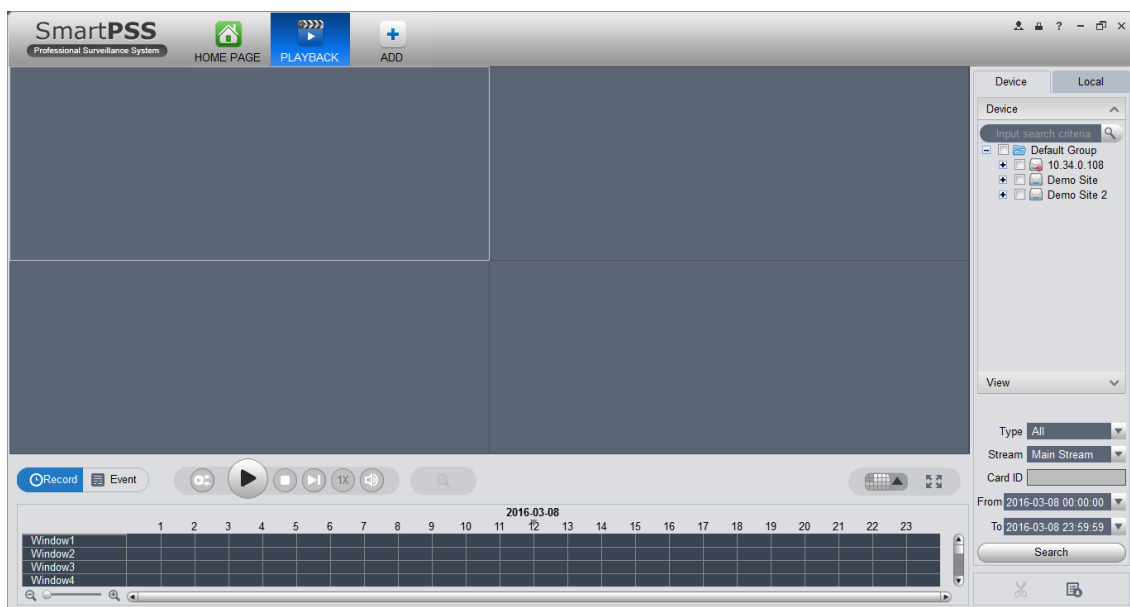
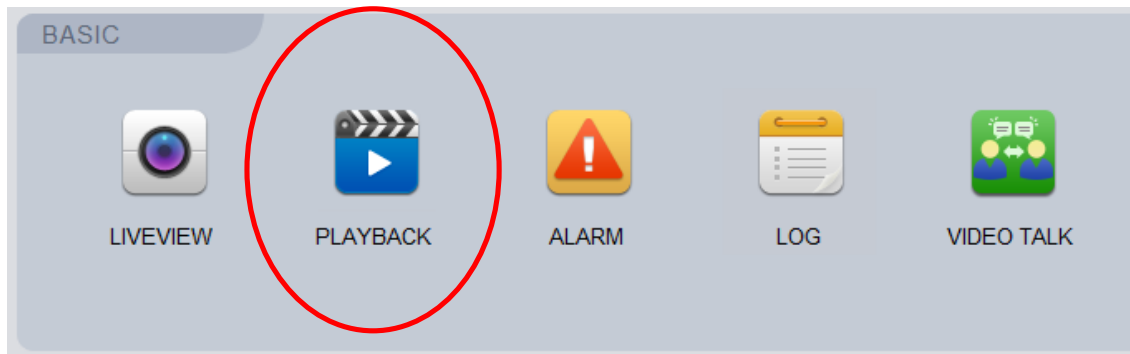
Full Screen View

Double clicking on the video pane will enlarge the view to a single pane and the full screen icon will hide all of the non-video element of the screen. The escape key will return to the standard view.

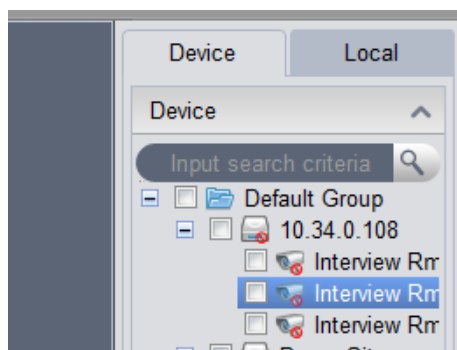
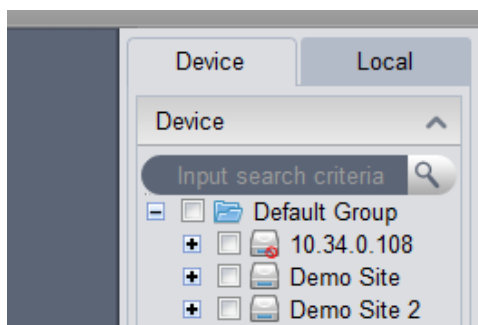


Video Playback

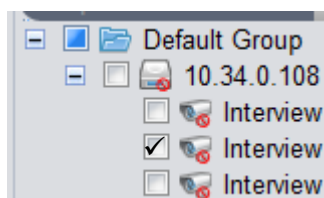
lick the PLAYBACK icon to open the live view.



In the tree on the right hand side click on the + symbol adjacent to the recorder icon to expand the tree.

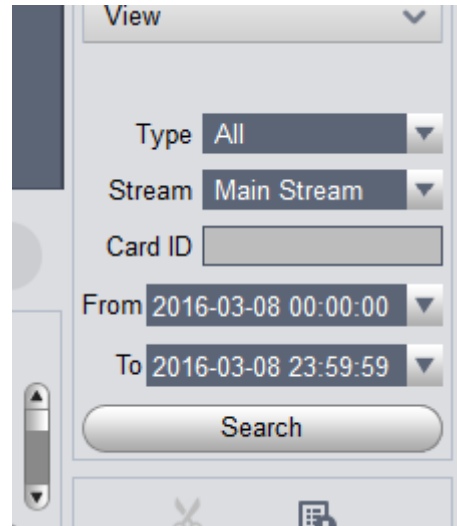


Tick the box next to the title of the camera(s) that you would like to view.

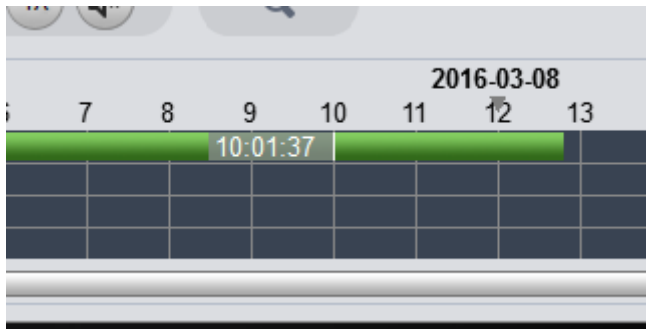


Set the date to the day that you wish to view and ensure that the times cover the period that you are interested in.

Click the search button.



At the bottom of the screen the time line will populate showing the recording from the camera that you have selected as a green line – please note that if you are looking at video from today the line will not be complete as it is displaying a live timeline.

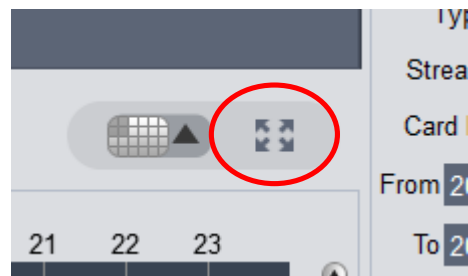


Clicking on the timeline will start video playing from the time selected in the currently selected video pane.

The wheel on the mouse can be used to zoom in (expand) and zoom out (contract) the scale upon which the timeline is displayed giving more detailed control of the time selected.

Full Screen View

Double clicking on the video pane will enlarge the view to a single pane and the full screen icon will hide all of the non-video element of the screen. The escape key will return to the standard view.

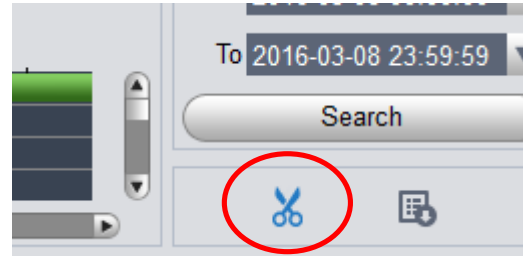


Archiving

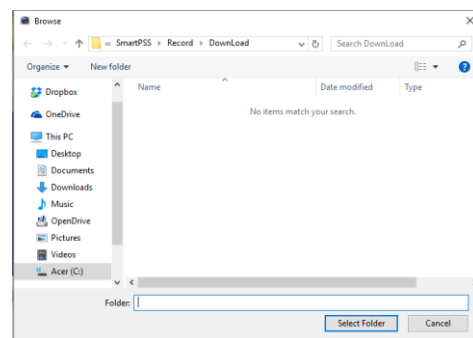
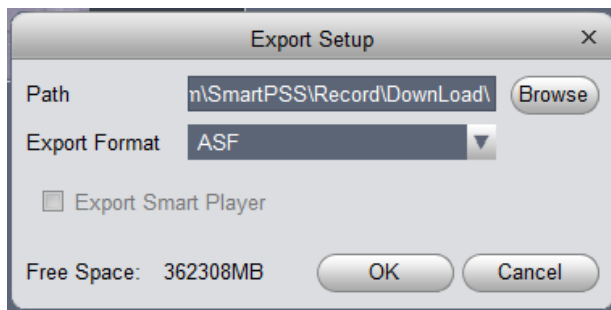
Whilst in the playback window video can be archived from the recorder to the local computer for future use.

To select the start time for the clip to be downloaded, pause the playback at the start time then click the scissor icon;

Next, move the playback cursor to the time that you wish to end the download then click the scissor icon once it becomes blue again.

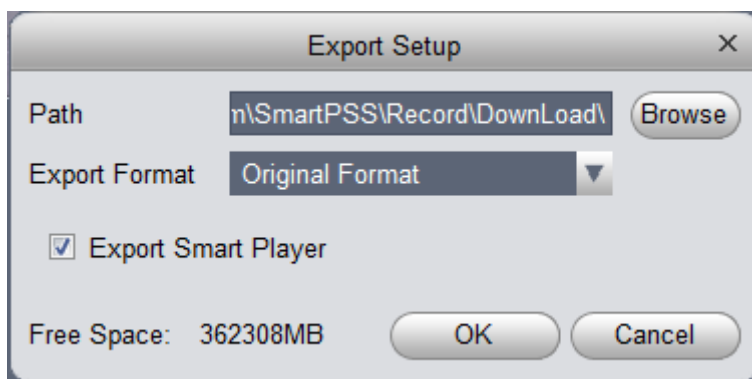


The download dialogue box will now open.



Click browse and choose the location where you would like to store the file once downloaded.

Once the file location has been selected, change the Export Format to Original Format and the 'Export Smart Player' box should be ticked – this will cause the software that is required for playback to be exported along with the footage.



Once the download is complete you can view the files in the location selected earlier.